

KNOWLEDGE PILLS

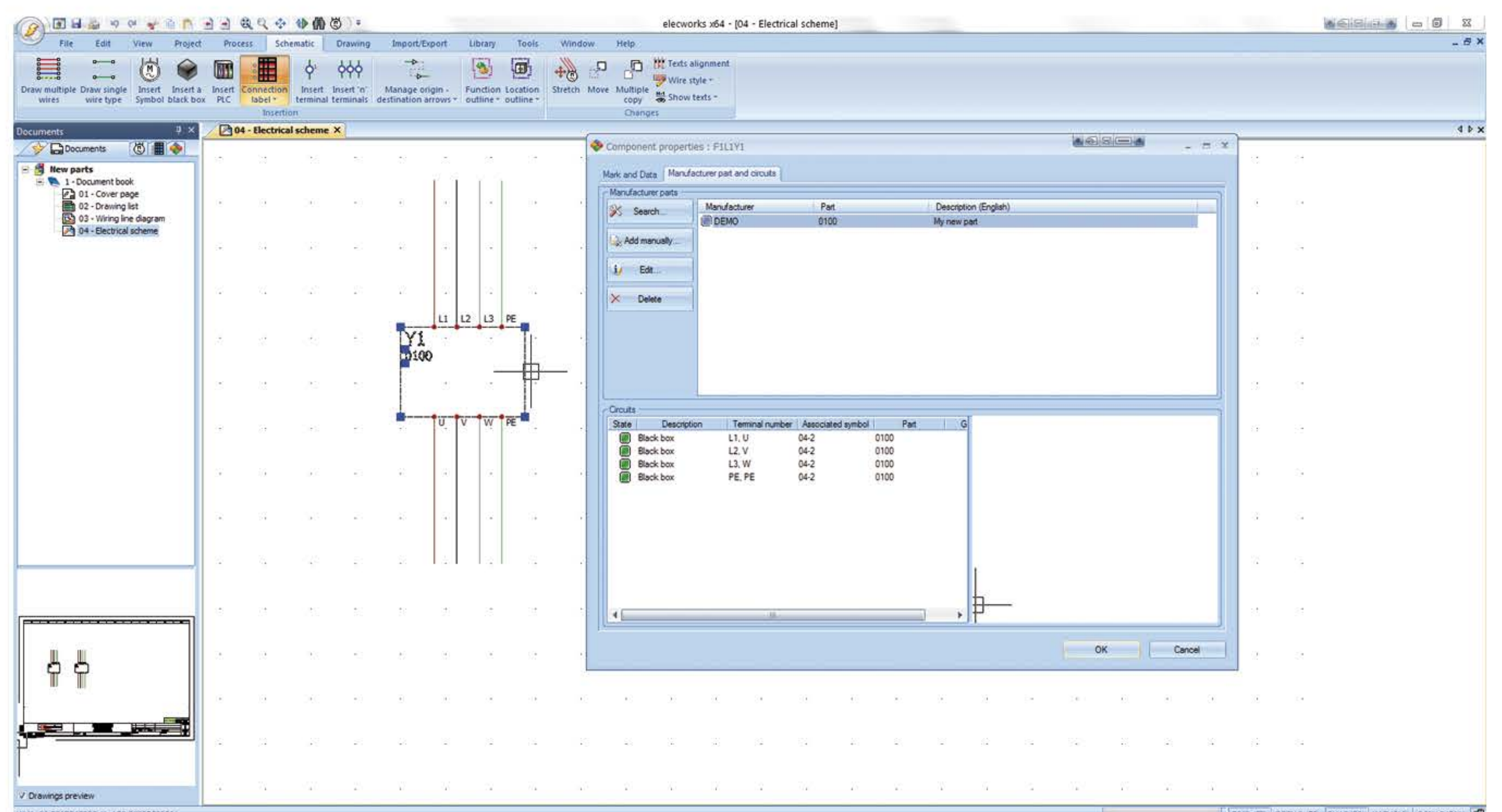


New part from component

Parts in **elecworks™** can be added, through the parts manager or through the component symbols already inserted in the schemes.

This knowledge pill shows how to create a part through the component, and add it to your project as well as to your parts catalog.

Pay particular attention to the option, which helps you, to save the part created to the parts catalog. You can see how to assign the new part to another similar black box symbol from the catalog.



WATCH THE VIDEO

DOWNLOAD SAMPLE DATA



Did you know that in electrical content portal you will find thousands of references for your projects?

Electrical Content Portal

tracesoftware

76430 Saint Romain de Colbosc , France
 Phone : +33 (0)2 32 79 59 66 | Fax : +33 (0)2 22 44 89 56
 Email : support@trace-software.com