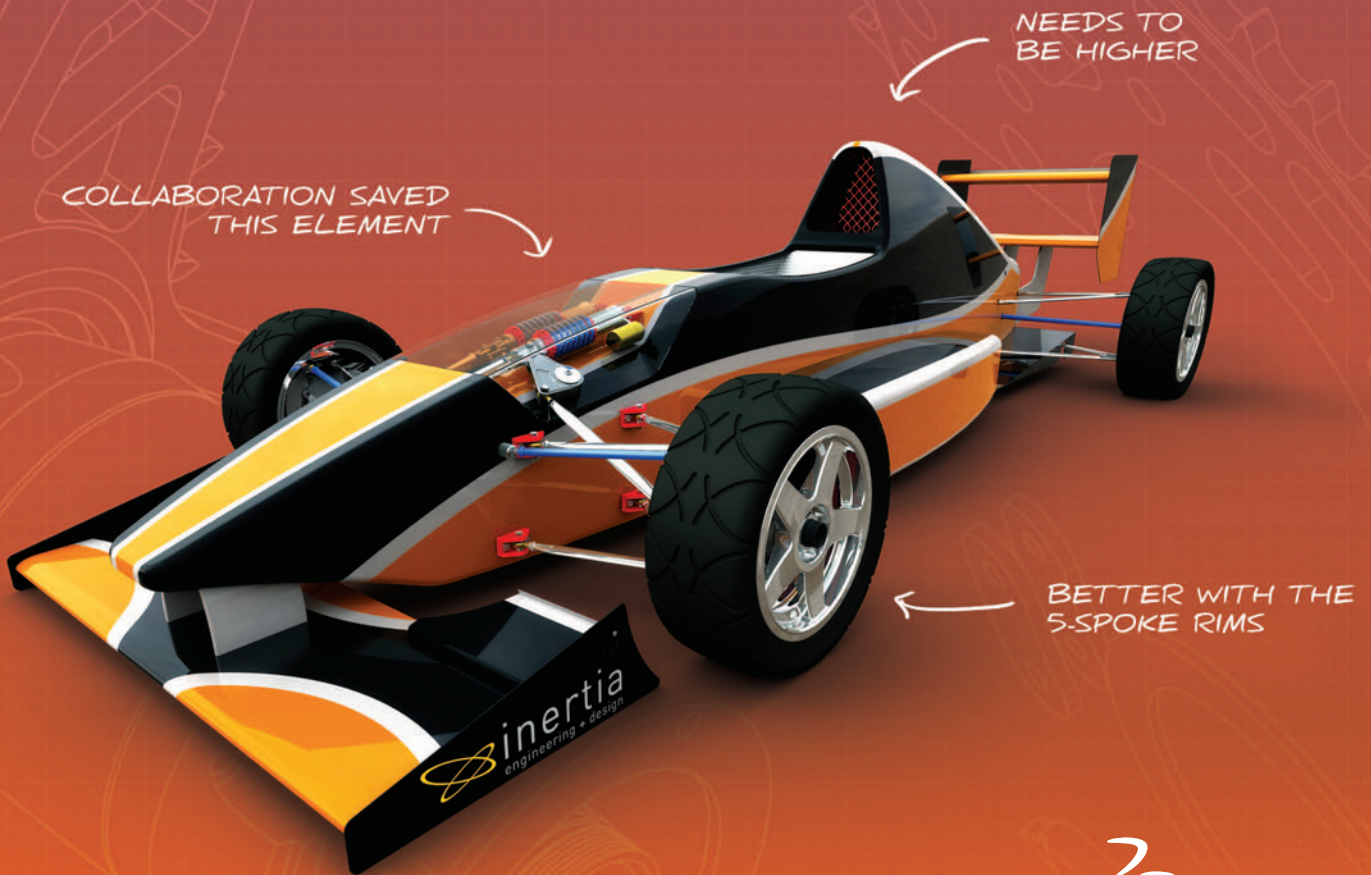


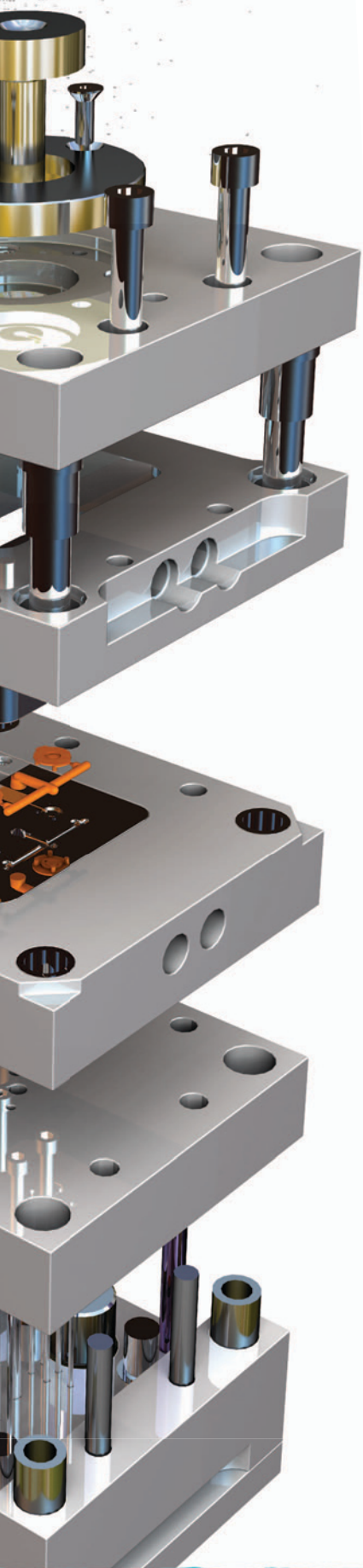
# CERTIFIED PARTNER BROCHURE

Dassault Systèmes SolidWorks



LET'S GO  
DESIGN





# SOLIDWORKS CERTIFIED PARTNER PRODUCTS

## INTEGRATED - ASSOCIATIVE - CERTIFIED

SolidWorks Certified Partner Products provide the power you need to finish the job right. Products include a wide range of knowledge based engineering (KBE) solutions for design automation, mold design software solutions for developing the tooling for mold-based manufacturing processes, computer-aided manufacturing (CAM) tools for generating toolpaths, and much more. Whatever the need, SolidWorks Certified Partner Products offer best-in-class integrated solutions to help you get products to market faster.

### ▶ SINGLE-WINDOW INTEGRATION

Eliminate concerns about exporting data with solutions that run directly within the SolidWorks® software environment. With single-window integration, all the tools you need work together using the same design data. Instead of exporting models to a standalone product, you can work directly on the native SolidWorks geometry and features. Certified Partner Products take advantage of unique SolidWorks capabilities, such as Configurations, PropertyManager, and the FeatureManager® design tree.

### ▶ ASSOCIATIVE

Like SolidWorks software, Certified Partner Products are fully associative, ensuring that your data is always "in-sync." When you make design changes, the Certified Partner Product updates data automatically or warns you that additional changes are necessary.

### ▶ CERTIFIED

All Certified Partner Products undergo rigorous evaluation by our certification team to assure strict compliance. As a SolidWorks user, you can be sure that the product will look and feel like SolidWorks, and that it will continue to work with each new SolidWorks release. We are always evaluating new solutions for Certified Partner Product status, so be sure to visit [www.solidworks.com](http://www.solidworks.com) and the Partner Products area for an up-to-date listing.

---

## CONTENTS

---

### CERTIFIED GOLD PARTNERS

---

Analysis/FEM/FEA	page 4
Component Design/Libraries	page 5
Data Translation Software	page 6
Die Design Software	page 6
Electrical and Electronics Design	page 7
ERP/MRP Software	page 7
Industrial Design Software	page 8
Insp. Reverse Engineering Software	page 8
Knowledge-Based Engineering	page 9
Manufacturing/CAM Software	page 9
Mold Design Software	page 11
Optical Design Software	page 12
PDM/PLM Software	page 13
Sheet Metal Software	page 16
Tolerance Analysis Software	page 17
Utilities	page 17

### CERTIFIED CAM PARTNERS

---

Manufacturing/CAM Software	page 18
----------------------------	---------

## ELECTRICAL AND ELECTRONICS DESIGN



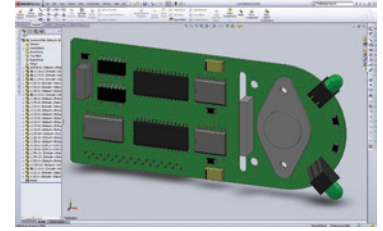
### Desktop EDA SolidWorks IDF Modeler

Suite 26  
2 Park Drive  
Bundoora VIC 3083  
Australia

+ 61 3 9455 2289

[info@desktop-eda.com.au](mailto:info@desktop-eda.com.au)

<http://www.desktop-eda.com.au>



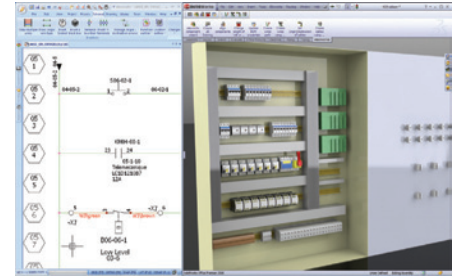
### Trace Software International elecworks™

Parc Eco Normandie  
76430 Saint Romain de Colbosc  
France

+33 232 79 44 24

[sales@elecworks.com](mailto:sales@elecworks.com)

<http://www.elecworks.com>



## ERP/MRP SOFTWARE



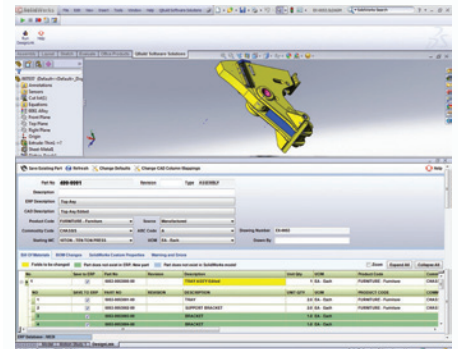
### QBuild Corporation ERPLink

145 Renfrew Drive  
Unit 140  
Markham, Ontario L3R 9R6  
Canada

905 479 7811

[info@qbuildsoftware.com](mailto:info@qbuildsoftware.com)

<http://www.qbuildsoftware.com>





SolidWorks and FeatureManager® are registered trademarks of Dassault Systèmes SolidWorks Corp. All other company and product names are the trademarks or registered trademarks of their respective owners. © 2010 Dassault Systèmes. All rights reserved.